

**SIX MCF RESIDENTIAL GAS BILL ANALYSIS
FOR TWENTY-FIVE TEXAS CITIES**



GAS SERVICES DIVISION
September 2000

Introduction

Included within are five tables reflecting an analysis of a 6 Mcf gas bill for twenty-five Texas cities. These cities provide a geographic representation of the State.

Six Mcf reflects the approximate monthly average consumption of gas on an annual basis for the state, and is used in each table.

All other items such as penalties, taxes, applicable city fees, etc., normally included in a gross bill are excluded.

Table of Contents

Introduction	Page 1
Table 1 - Total Bill	Pages 2-3
Table 2 - Analysis of Gas Bill	Pages 4-5
Table 3 - Cost of Gas	Pages 6-7
Table 4 - Analysis of Cost of Gas	Pages 8-9
Table 5 - Cost of Service	Pages 10-11

**TABLE 1 - TWENTY FIVE TEXAS CITIES
SIX MCF RESIDENTIAL GAS BILL
TOTAL BILL
(Cost of Gas Plus Cost of Service)**

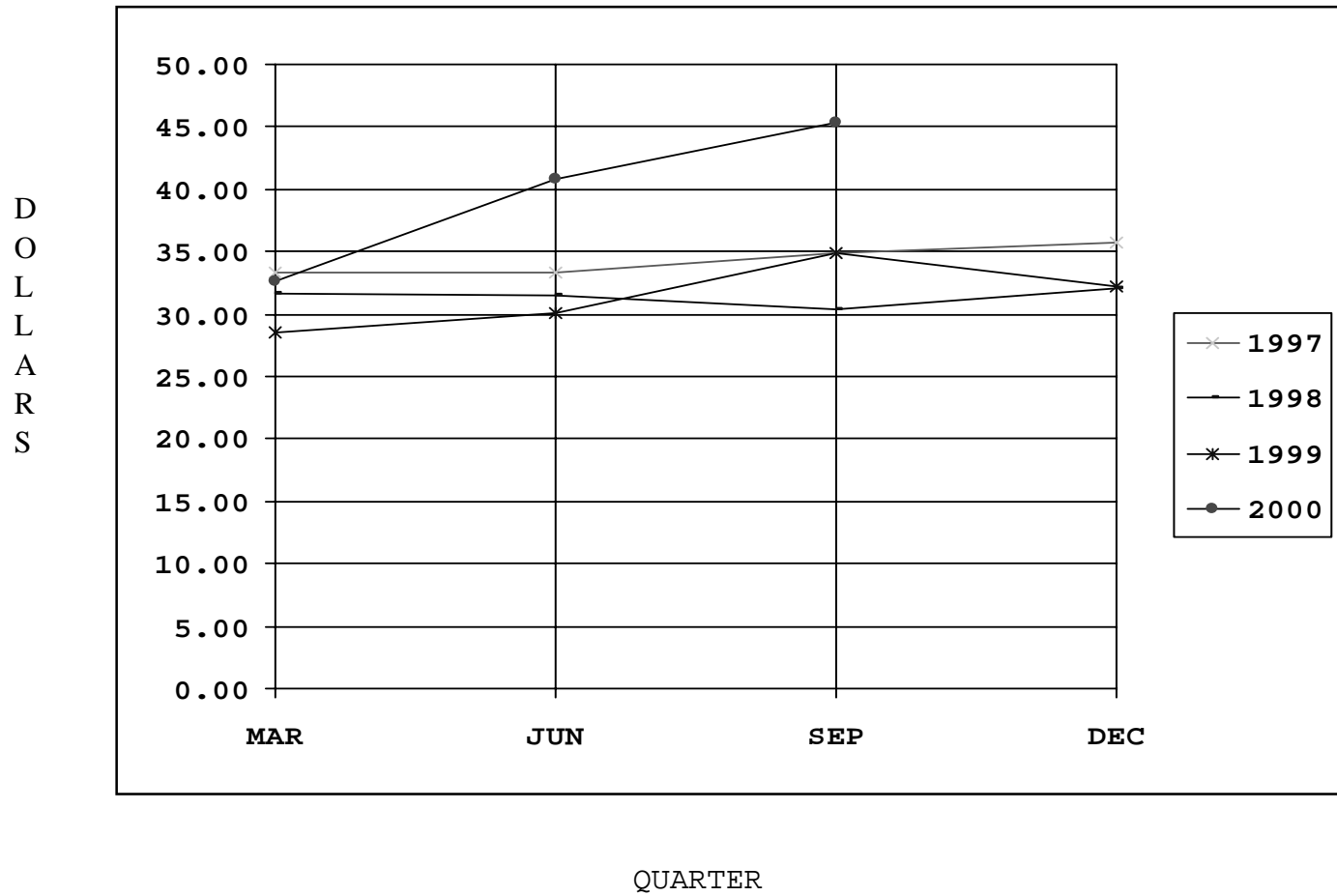
CITY	GAS CO.	JAN 00	FEB 00	MAR 00	APR 00	MAY 00	JUN 00	JUL 00	AUG 00	SEP 00	OCT 99	NOV 99	DEC 99
Abilene	LSG	38.65	39.11	37.07	41.46	36.36	46.94	40.80	40.73	40.91	42.53	40.49	38.07
Amarillo	ENG	25.43	26.54	27.06	27.62	28.28	32.18	31.94	31.94	33.06	23.60	23.60	23.60
Austin	SUG	34.70	36.51	35.89	38.61	38.43	46.74	47.22	44.19	49.44	35.83	39.12	32.60
Beaumont	ETX	36.87	36.89	36.89	36.89	36.89	36.89	53.26	53.26	53.26	36.87	36.87	36.87
Brownsville	SUG	33.06	35.37	35.00	37.98	38.30	44.73	45.36	40.56	46.50	35.01	38.64	32.78
Bryan	LSG	29.17	29.64	27.52	32.08	26.79	37.77	40.49	40.41	47.91	33.18	31.07	28.56
Corpus Christi	MUN	36.99	38.31	39.75	39.93	41.73	42.81	50.61	47.49	52.17	41.24	39.02	41.96
Dallas	LSG	31.27	31.75	29.59	34.23	28.85	40.02	42.79	42.71	42.90	35.35	33.21	30.65
El Paso	SUG	26.92	26.90	27.30	27.42	27.62	34.99	35.91	33.47	35.98	25.90	28.57	26.92
Fort Worth	LSG	35.25	35.74	33.52	38.28	32.76	44.23	47.08	46.99	47.19	39.44	37.24	34.61
Galveston	SUG	32.69	34.41	34.34	36.88	37.77	45.80	47.77	44.34	50.93	34.14	37.44	31.11
Houston	ETX	32.63	34.71	34.71	34.71	34.71	34.71	34.71	47.37	47.56	32.63	32.63	32.63
Laredo	ETX	26.45	26.67	26.67	26.67	26.67	26.67	49.53	49.53	49.53	26.45	26.45	26.45
Lubbock	ENG	30.48	30.06	30.06	31.56	30.72	39.96	40.26	40.80	42.54	29.70	33.18	31.08
McAllen	SUG	33.06	35.37	35.00	37.98	38.30	44.73	45.36	40.56	46.50	35.01	38.64	32.78
Midland	ENG	30.00	30.00	29.40	30.66	30.96	40.86	40.98	40.98	42.66	30.90	32.16	30.66
Odessa	ENG	26.94	30.66	30.90	32.76	31.74	40.02	40.62	37.98	43.74	28.74	31.74	27.42
San Angelo	LSG	34.93	35.39	33.36	37.71	30.81	41.30	44.18	44.10	44.28	36.92	36.75	34.35
San Antonio	MUN	32.72	33.67	33.77	36.44	37.61	45.51	46.82	41.44	45.94	35.21	37.13	31.58
Sherman	LSG	33.04	33.52	31.38	35.96	30.65	41.68	44.42	44.34	44.53	37.08	34.96	32.43
Temple**	LSG	32.43	32.92	30.73	35.42	25.89	37.17	39.97	39.98	40.08	32.46	34.39	31.80
Texarkana	ARK	40.81	41.49	41.69	42.96	45.14	50.36	53.81	52.15	54.48	47.56	43.55	40.21
Tyler	ETX	29.63	29.57	29.56	29.57	29.57	29.57	45.87	45.87	45.87	29.63	29.63	29.63
Waco	LSG	38.83	39.31	37.19	41.73	36.46	47.41	43.82	43.74	43.93	42.84	40.73	38.22
Wichita Falls	LSG	29.57	30.05	27.90	32.52	35.20	45.99	41.58	41.50	41.68	33.64	31.50	28.95
Average		32.50	33.38	32.65	35.12	33.53	40.76	43.81	43.06	45.34	34.47	34.75	32.24

RATE CHANGE APPROVALS - Amarillo - Jan 00, El Paso - Mar 00

**WINTER RATES - NOVEMBER THROUGH APRIL, SUMMER RATES - MAY THROUGH OCTOBER

Corpus Christi figures for Jan, Feb, and Mar 00 are revised to show a rate increase that went into effect in August 1999.

TWENTY-FIVE TEXAS CITIES
SIX MCF RESIDENTIAL GAS BILL
TOTAL BILL



**TABLE 2 - TWENTY FIVE TEXAS CITIES
SIX MCF RESIDENTIAL GAS BILL
ANALYSIS OF GAS BILL**

CITY	GAS CO.	Jan-00			Feb-00			Mar-00			Apr-00			May-00			Jun-00		
		A	B	C	A	B	C	A	B	C	A	B	C	A	B	C	A	B	C
Abilene	LSG	11.55	27.10	38.65	11.55	27.56	39.11	11.55	25.51	37.07	11.55	29.91	41.46	11.55	24.81	36.36	11.55	35.39	46.94
Amarillo	ENG	11.79	13.64	25.43	11.79	14.75	26.54	11.79	15.27	27.06	11.79	15.83	27.62	11.79	16.49	28.28	11.79	20.39	32.18
Austin	SUG	17.22	17.47	34.70	17.22	19.28	36.51	17.22	18.66	35.89	17.22	21.38	38.61	17.22	21.20	38.43	17.22	29.51	46.74
Beaumont	ETX	16.96	19.91	36.87	16.96	19.93	36.89	16.96	19.93	36.89	16.96	19.93	36.89	16.96	19.93	36.89	16.96	19.93	36.89
Brownsville	SUG	15.72	17.33	33.06	15.72	19.64	35.37	15.72	19.27	35.00	15.72	22.25	37.98	15.72	22.58	38.30	15.72	29.00	44.73
Bryan	LSG	9.91	19.26	29.17	9.91	19.74	29.64	9.91	17.61	27.52	9.91	22.17	32.08	9.91	16.89	26.79	9.91	27.86	37.77
Corpus Christi	MUN	21.09	15.90	36.99	21.09	17.22	38.31	21.09	18.66	39.75	21.09	18.84	39.93	21.09	20.64	41.73	21.09	21.72	42.81
Dallas	LSG	12.09	19.17	31.27	12.09	19.66	31.75	12.09	17.50	29.59	12.09	22.13	34.23	12.09	16.76	28.85	12.09	27.93	40.02
El Paso	SUG	9.75	17.17	26.92	9.75	17.14	26.90	9.75	17.54	27.30	9.10	18.32	27.42	9.10	18.52	27.62	9.10	25.89	34.99
Fort Worth	LSG	16.20	19.04	35.25	16.20	19.54	35.74	16.20	17.32	33.52	16.20	22.08	38.28	16.20	16.56	32.76	16.20	28.03	44.23
Galveston	SUG	17.00	15.69	32.69	17.00	17.40	34.41	17.00	17.34	34.34	17.00	19.87	36.88	17.00	20.76	37.77	17.00	28.80	45.80
Houston	ETX	13.38	19.26	32.63	13.38	21.33	34.71	13.38	21.33	34.71	13.38	21.33	34.71	13.38	21.33	34.71	13.38	21.33	34.71
Laredo	ETX	16.85	9.60	26.45	16.85	9.83	26.67	16.85	9.83	26.67	16.85	9.83	26.67	16.85	9.83	26.67	16.85	9.83	26.67
Lubbock	ENG	13.74	16.74	30.48	13.74	16.32	30.06	13.74	16.32	30.06	13.74	17.82	31.56	13.74	16.98	30.72	13.74	26.22	39.96
McAllen	SUG	15.72	17.33	33.06	15.72	19.64	35.37	15.72	19.27	35.00	15.72	22.25	37.98	15.72	22.58	38.30	15.72	29.00	44.73
Midland	ENG	13.74	16.26	30.00	13.74	16.26	30.00	13.74	15.66	29.40	13.74	16.92	30.66	13.74	17.22	30.96	13.74	27.12	40.86
Odessa	ENG	13.74	13.20	26.94	13.74	16.92	30.66	13.74	17.16	30.90	13.74	19.02	32.76	13.74	18.00	31.74	13.74	26.28	40.02
San Angelo	LSG	12.87	22.07	34.93	12.87	22.52	35.39	12.87	20.49	33.36	12.87	24.84	37.71	11.02	19.79	30.81	11.02	30.28	41.30
San Antonio	MUN	16.93	15.79	32.72	16.93	16.74	33.67	16.93	16.84	33.77	16.93	19.51	36.44	16.93	20.68	37.61	16.93	28.58	45.51
Sherman	LSG	13.80	19.24	33.04	13.80	19.72	33.52	13.80	17.58	31.38	13.80	22.16	35.96	13.80	16.85	30.65	13.80	27.88	41.68
Temple	LSG	13.30	19.13	32.43	13.30	19.61	32.92	13.30	17.43	30.73	13.30	22.11	35.42	9.20	16.68	25.89	9.20	27.97	37.17
Texarkana	ARK	16.08	24.73	40.81	16.08	25.41	41.49	16.08	25.60	41.69	16.08	26.87	42.96	16.08	29.05	45.14	16.08	34.27	50.36
Tyler	ETX	16.29	13.34	29.63	16.29	13.28	29.57	16.29	13.26	29.56	16.29	13.28	29.57	16.29	13.28	29.57	16.29	13.28	29.57
Waco	LSG	11.62	27.21	38.83	11.62	27.68	39.31	11.62	25.56	37.19	11.62	30.11	41.73	11.62	24.84	36.46	11.62	35.79	47.41
Wichita Falls	LSG	10.37	19.19	29.57	10.37	19.68	30.05	10.37	17.52	27.90	10.38	22.14	32.52	10.38	24.83	35.20	10.38	35.61	45.99
Average		14.31	18.19	32.50	14.31	19.07	33.38	14.31	18.34	32.65	14.28	20.84	35.12	14.05	19.48	33.53	14.05	26.72	40.76

A-COST OF SERVICE (EXCLUDING COST OF GAS)

B-COST OF GAS (INCLUDES COST OF GAS IN BASE PLUS COST OF GAS ADJUSTMENT)

C-TOTAL BILL (TOTAL COST OF GAS PLUS COST OF SERVICE)

**TABLE 2 - TWENTY FIVE TEXAS CITIES
SIX MCF RESIDENTIAL GAS BILL
ANALYSIS OF GAS BILL**

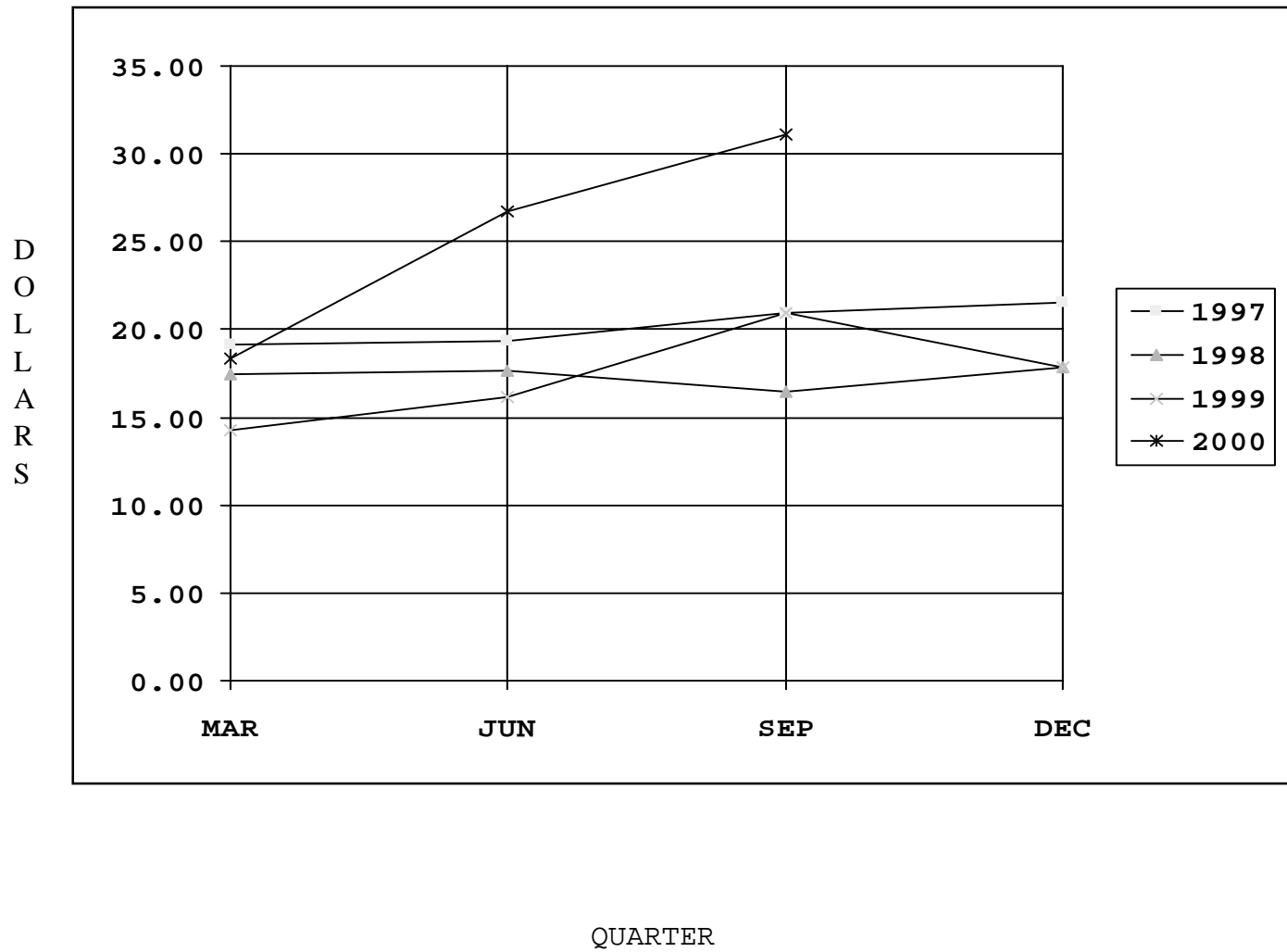
Jul-00			Aug-00			Sep-00			Oct-99			Nov-99			Dec-99			GAS CO. CITY	
A	B	C	A	B	C	A	B	C	A	B	C	A	B	C	A	B	C		
10.39	30.42	40.80	10.39	30.34	40.73	10.39	30.52	40.91	11.55	30.97	42.53	11.55	28.94	40.49	11.55	26.52	38.07	LSG	Abilene
11.79	20.15	31.94	11.79	20.15	31.94	11.79	21.27	33.06	10.70	12.91	23.60	10.70	12.91	23.60	10.70	12.91	23.60	ENG	Amarillo
17.22	29.99	47.22	17.22	26.97	44.19	17.22	32.22	49.44	17.22	18.61	35.83	17.22	21.89	39.12	17.22	15.38	32.60	SUG	Austin
16.96	36.30	53.26	16.96	36.30	53.26	16.96	36.30	53.26	16.96	19.91	36.87	16.96	19.91	36.87	16.96	19.91	36.87	ETX	Beaumont
15.72	29.64	45.36	15.72	24.84	40.56	15.72	30.78	46.50	15.72	19.28	35.01	15.72	22.92	38.64	15.72	17.06	32.78	SUG	Brownsville
9.91	30.59	40.49	9.91	30.51	40.41	9.91	38.00	47.91	9.91	23.28	33.18	9.91	21.17	31.07	9.91	18.65	28.56	LSG	Bryan
21.09	29.52	50.61	21.09	26.40	47.49	21.09	31.08	52.17	20.48	20.76	41.24	20.48	18.54	39.02	20.48	21.48	41.96	MUN	Corpus Christi
12.09	30.70	42.79	12.09	30.62	42.71	12.09	30.81	42.90	12.09	23.26	35.35	12.09	21.11	33.21	12.09	18.55	30.65	LSG	Dallas
9.10	26.81	35.91	9.10	24.37	33.47	9.10	26.88	35.98	9.75	16.14	25.90	9.75	18.82	28.57	9.75	17.17	26.92	SUG	El Paso
16.20	30.87	47.08	16.20	30.79	46.99	16.20	30.99	47.19	16.20	23.24	39.44	16.20	21.03	37.24	16.20	18.41	34.61	LSG	Fort Worth
17.00	30.77	47.77	17.00	27.34	44.34	17.00	33.93	50.93	17.00	17.14	34.14	17.00	20.43	37.44	17.00	14.11	31.11	SUG	Galveston
13.38	21.33	34.71	13.38	33.99	47.37	13.38	34.19	47.56	13.38	19.26	32.63	13.38	19.26	32.63	13.38	19.26	32.63	ETX	Houston
16.85	32.69	49.53	16.85	32.69	49.53	16.85	32.69	49.53	16.85	9.60	26.45	16.85	9.60	26.45	16.85	9.60	26.45	ETX	Laredo
13.74	26.52	40.26	13.74	27.06	40.80	13.74	28.80	42.54	13.74	15.96	29.70	13.74	19.44	33.18	13.74	17.34	31.08	ENG	Lubbock
15.72	29.64	45.36	15.72	24.84	40.56	15.72	30.78	46.50	15.72	19.28	35.01	15.72	22.92	38.64	15.72	17.06	32.78	SUG	McAllen
13.74	27.24	40.98	13.74	27.24	40.98	13.74	28.92	42.66	13.74	17.16	30.90	13.74	18.42	32.16	13.74	16.92	30.66	ENG	Midland
13.74	26.88	40.62	13.74	24.24	37.98	13.74	30.00	43.74	13.74	15.00	28.74	13.74	18.00	31.74	13.74	13.68	27.42	ENG	Odessa
13.88	30.30	44.18	13.88	30.22	44.10	13.88	30.40	44.28	11.02	25.90	36.92	12.87	23.89	36.75	12.87	21.48	34.35	LSG	San Angelo
16.93	29.89	46.82	16.93	24.51	41.44	16.93	29.01	45.94	16.93	18.28	35.21	16.93	20.20	37.13	16.93	14.65	31.58	MUN	San Antonio
13.80	30.62	44.42	13.80	30.54	44.34	13.80	30.73	44.53	13.80	23.27	37.08	13.80	21.15	34.96	13.80	18.63	32.43	LSG	Sherman
9.20	30.77	39.97	9.20	30.78	39.98	9.20	30.88	40.08	9.20	23.25	32.46	13.30	21.08	34.39	13.30	18.50	31.80	LSG	Temple
16.08	37.73	53.81	16.08	36.07	52.15	16.08	38.39	54.48	16.08	31.48	47.56	16.08	27.47	43.55	16.08	24.13	40.21	ARK	Texarkana
16.29	29.58	45.87	16.29	29.58	45.87	16.29	29.58	45.87	16.29	13.34	29.63	16.29	13.34	29.63	16.29	13.34	29.63	ETX	Tyler
12.92	30.90	43.82	12.92	30.82	43.74	12.92	31.01	43.93	11.62	31.21	42.84	11.62	29.11	40.73	11.62	26.60	38.22	LSG	Waco
10.88	30.69	41.58	10.88	30.61	41.50	10.88	30.80	41.68	10.37	23.27	33.64	10.37	21.13	31.50	10.37	18.58	28.95	LSG	Wichita Falls
14.19	29.62	43.81	14.19	28.87	43.06	14.19	31.16	45.34	14.00	20.47	34.47	14.24	20.51	34.75	14.24	18.00	32.24		Average

**TABLE 3 - TWENTY FIVE TEXAS CITIES
SIX MCF RESIDENTIAL GAS BILL
***COST OF GAS
(EXCLUDING COST OF SERVICE)**

CITY	GAS CO.	Jan-00	Feb-00	Mar-00	Apr-00	May-00	Jun-00	Jul-00	Aug-00	Sep-99	Oct-99	Nov-99	Dec-99
Abilene	LSG	27.10	27.56	25.51	29.91	24.81	35.39	30.42	30.34	30.52	30.97	28.94	26.52
Amarillo	ENG	13.64	14.75	15.27	15.83	16.49	20.39	20.15	20.15	21.27	12.91	12.91	12.91
Austin	SUG	17.47	19.28	18.66	21.38	21.20	29.51	29.99	26.97	32.22	18.61	21.89	15.38
Beaumont	ETX	19.91	19.93	19.93	19.93	19.93	19.93	36.30	36.30	36.30	19.91	19.91	19.91
Brownsville	SUG	17.33	19.64	19.27	22.25	22.58	29.00	29.64	24.84	30.78	19.28	22.92	17.06
Bryan	LSG	19.26	19.74	17.61	22.17	16.89	27.86	30.59	30.51	38.00	23.28	21.17	18.65
Corpus Christi	MUN	15.90	17.22	18.66	18.84	20.64	21.72	29.52	26.40	31.08	20.76	18.54	21.48
Dallas	LSG	19.17	19.66	17.50	22.13	16.76	27.93	30.70	30.62	30.81	23.26	21.11	18.55
El Paso	SUG	17.17	17.14	17.54	18.32	18.52	25.89	26.81	24.37	26.88	16.14	18.82	17.17
Fort Worth	LSG	19.04	19.54	17.32	22.08	16.56	28.03	30.87	30.79	30.99	23.24	21.03	18.41
Galveston	SUG	15.69	17.40	17.34	19.87	20.76	28.80	30.77	27.34	33.93	17.14	20.43	14.11
Houston	ETX	19.26	21.33	21.33	21.33	21.33	21.33	21.33	33.99	34.19	19.26	19.26	19.26
Laredo	ETX	9.60	9.83	9.83	9.83	9.83	9.83	32.69	32.69	32.69	9.60	9.60	9.60
Lubbock	ENG	16.74	16.32	16.32	17.82	16.98	26.22	26.52	27.06	28.80	15.96	19.44	17.34
McAllen	SUG	17.33	19.64	19.27	22.25	22.58	29.00	29.64	24.84	30.78	19.28	22.92	17.06
Midland	ENG	16.26	16.26	15.66	16.92	17.22	27.12	27.24	27.24	28.92	17.16	18.42	16.92
Odessa	ENG	13.20	16.92	17.16	19.02	18.00	26.28	26.88	24.24	30.00	15.00	18.00	13.68
San Angelo	LSG	22.07	22.52	20.49	24.84	19.79	30.28	30.30	30.22	30.40	25.90	23.89	21.48
San Antonio	MUN	15.79	16.74	16.84	19.51	20.68	28.58	29.89	24.51	29.01	18.28	20.20	14.65
Sherman	LSG	19.24	19.72	17.58	22.16	16.85	27.88	30.62	30.54	30.73	23.27	21.15	18.63
Temple	LSG	19.13	19.61	17.43	22.11	16.68	27.97	30.77	30.78	30.88	23.25	21.08	18.50
Texarkana	ARK	24.73	25.41	25.60	26.87	29.05	34.27	37.73	36.07	38.39	31.48	27.47	24.13
Tyler	ETX	13.34	13.28	13.26	13.28	13.28	13.28	29.58	29.58	29.58	13.34	13.34	13.34
Waco	LSG	27.21	27.68	25.56	30.11	24.84	35.79	30.90	30.82	31.01	31.21	29.11	26.60
Wichita Falls	LSG	19.19	19.68	17.52	22.14	24.83	35.61	30.69	30.61	30.80	23.27	21.13	18.58
Average		18.19	19.07	18.34	20.84	19.48	26.72	29.62	28.87	31.16	20.47	20.51	18.00

***INCLUDES COST OF GAS IN BASE RATE PLUS COST OF GAS ADJUSTMENT.

TWENTY-FIVE TEXAS CITIES
SIX MCF RESIDENTIAL GAS BILL
COST OF GAS



**TABLE 4 - TWENTY FIVE TEXAS CITIES
SIX MCF RESIDENTIAL GAS BILL
ANALYSIS OF COST OF GAS**

CITY	GAS CO.	Jan-00			Feb-00			Mar-00			Apr-00			May-00			Jun-00		
		A	B	C	A	B	C	A	B	C	A	B	C	A	B	C	A	B	C
Abilene	LSG	24.12	2.98	27.10	24.12	3.44	27.56	24.12	1.39	25.51	24.12	5.79	29.91	24.12	0.69	24.81	24.12	11.27	35.39
Amarillo	ENG	0.00	13.64	13.64	0.00	14.75	14.75	0.00	15.27	15.27	0.00	15.83	15.83	0.00	16.49	16.49	0.00	20.39	20.39
Austin	SUG	0.00	17.47	17.47	0.00	19.28	19.28	0.00	18.66	18.66	0.00	21.38	21.38	0.00	21.20	21.20	0.00	29.51	29.51
Beaumont	ETX	20.40	-0.49	19.91	20.40	-0.48	19.93	20.40	-0.48	19.93	20.40	-0.48	19.93	20.40	-0.48	19.93	20.40	-0.48	19.93
Brownsville	SUG	12.00	5.33	17.33	12.00	7.64	19.64	12.00	7.27	19.27	12.00	10.25	22.25	12.00	10.58	22.58	12.00	17.00	29.00
Bryan	LSG	24.12	-4.86	19.26	24.12	-4.38	19.74	24.12	-6.51	17.61	24.12	-1.95	22.17	24.12	-7.23	16.89	24.12	3.74	27.86
Corpus Christi	MUN	0.00	15.90	15.90	0.00	17.22	17.22	0.00	18.66	18.66	0.00	18.84	18.84	0.00	20.64	20.64	0.00	21.72	21.72
Dallas	LSG	24.12	-4.95	19.17	24.12	-4.46	19.66	24.12	-6.62	17.50	24.12	-1.99	22.13	24.12	-7.36	16.76	24.12	3.81	27.93
El Paso	SUG	0.00	17.17	17.17	0.00	17.14	17.14	0.00	17.54	17.54	0.00	18.32	18.32	0.00	18.52	18.52	0.00	25.89	25.89
Fort Worth	LSG	24.12	-5.08	19.04	24.12	-4.58	19.54	24.12	-6.80	17.32	24.12	-2.04	22.08	24.12	-7.56	16.56	24.12	3.91	28.03
Galveston	SUG	0.00	15.69	15.69	0.00	17.40	17.40	0.00	17.34	17.34	0.00	19.87	19.87	0.00	20.76	20.76	0.00	28.80	28.80
Houston	ETX	15.43	3.83	19.26	15.43	5.90	21.33	15.43	5.90	21.33	15.43	5.90	21.33	15.43	5.90	21.33	15.43	5.90	21.33
Laredo	ETX	18.87	-9.27	9.60	18.87	-9.05	9.83	18.87	-9.05	9.83	18.87	-9.05	9.83	18.87	-9.05	9.83	18.87	-9.05	9.83
Lubbock	ENG	16.08	0.66	16.74	16.08	0.24	16.32	16.08	0.24	16.32	16.08	1.74	17.82	16.08	0.90	16.98	16.08	10.14	26.22
McAllen	SUG	12.00	5.33	17.33	12.00	7.64	19.64	12.00	7.27	19.27	12.00	10.25	22.25	12.00	10.58	22.58	12.00	17.00	29.00
Midland	ENG	16.08	0.18	16.26	16.08	0.18	16.26	16.08	-0.42	15.66	16.08	0.84	16.92	16.08	1.14	17.22	16.08	11.04	27.12
Odessa	ENG	16.08	-2.88	13.20	16.08	0.84	16.92	16.08	1.08	17.16	16.08	2.94	19.02	16.08	1.92	18.00	16.08	10.20	26.28
San Angelo	LSG	19.11	2.96	22.07	19.11	3.41	22.52	19.11	1.38	20.49	19.11	5.73	24.84	19.11	0.69	19.79	19.11	11.17	30.28
San Antonio	MUN	13.20	2.59	15.79	13.20	3.54	16.74	13.20	3.64	16.84	13.20	6.31	19.51	13.20	7.48	20.68	13.20	15.38	28.58
Sherman	LSG	24.12	-4.88	19.24	24.12	-4.40	19.72	24.12	-6.54	17.58	24.12	-1.96	22.16	24.12	-7.27	16.85	24.12	3.76	27.88
Temple	LSG	24.12	-4.99	19.13	24.12	-4.51	19.61	24.12	-6.69	17.43	24.12	-2.01	22.11	24.12	-7.44	16.68	24.12	3.85	27.97
Texarkana	ARK	0.00	24.73	24.73	0.00	25.41	25.41	0.00	25.60	25.60	0.00	26.87	26.87	0.00	29.05	29.05	0.00	34.27	34.27
Tyler	ETX	19.65	-6.31	13.34	19.65	-6.36	13.28	19.65	-6.38	13.26	19.65	-6.36	13.28	19.65	-6.36	13.28	19.65	-6.36	13.28
Waco	LSG	24.12	3.09	27.21	24.12	3.56	27.68	24.12	1.44	25.56	24.12	5.99	30.11	24.12	0.72	24.84	24.12	11.67	35.79
Wichita Falls	LSG	24.12	-4.93	19.19	24.12	-4.44	19.68	24.12	-6.60	17.52	24.12	-1.98	22.14	24.12	0.71	24.83	24.12	11.49	35.61
Average		14.87	3.32	18.19	14.87	4.20	19.07	14.87	3.46	18.34	14.87	5.96	20.84	14.87	4.61	19.48	14.87	11.84	26.72

A-COST OF GAS INCLUDED IN BASE RATE
B-COST OF GAS ADJUSTMENT
C-TOTAL COST OF GAS

**TABLE 4 - TWENTY FIVE TEXAS CITIES
SIX MCF RESIDENTIAL GAS BILL
ANALYSIS OF COST OF GAS**

Jul-00			Aug-00			Sep-00			Oct-99			Nov-99			Dec-99			GAS CO.	CITY
A	B	C	A	B	C	A	B	C	A	B	C	A	B	C	A	B	C		
16.52	13.90	30.42	16.52	13.82	30.34	16.52	14.00	30.52	24.12	6.85	30.97	24.12	4.82	28.94	24.12	2.40	26.52	LSG	Abilene
0.00	20.15	20.15	0.00	20.15	20.15	0.00	21.27	21.27	14.94	-2.03	12.91	14.94	-2.03	12.91	14.94	-2.03	12.91	ENG	Amarillo
0.00	29.99	29.99	0.00	26.97	26.97	0.00	32.22	32.22	0.00	18.61	18.61	0.00	21.89	21.89	0.00	15.38	15.38	SUG	Austin
20.40	15.90	36.30	20.40	15.90	36.30	20.40	15.90	36.30	20.40	-0.49	19.91	20.40	-0.49	19.91	20.40	-0.49	19.91	ETX	Beaumont
12.00	17.64	29.64	12.00	12.84	24.84	12.00	18.78	30.78	12.00	7.28	19.28	12.00	10.92	22.92	12.00	5.06	17.06	SUG	Brownsville
24.12	6.47	30.59	24.12	6.39	30.51	24.12	13.88	38.00	24.12	-0.84	23.28	24.12	-2.95	21.17	24.12	-5.47	18.65	LSG	Bryan
0.00	29.52	29.52	0.00	26.40	26.40	0.00	31.08	31.08	0.00	20.76	20.76	0.00	18.54	18.54	0.00	21.48	21.48	MUN	Corpus Christi
24.12	6.58	30.70	24.12	6.50	30.62	24.12	6.69	30.81	24.12	-0.86	23.26	24.12	-3.01	21.11	24.12	-5.57	18.55	LSG	Dallas
0.00	26.81	26.81	0.00	24.37	24.37	0.00	26.88	26.88	0.00	16.14	16.14	0.00	18.82	18.82	0.00	17.17	17.17	SUG	El Paso
24.12	6.75	30.87	24.12	6.67	30.79	24.12	6.87	30.99	24.12	-0.88	23.24	24.12	-3.09	21.03	24.12	-5.71	18.41	LSG	Fort Worth
0.00	30.77	30.77	0.00	27.34	27.34	0.00	33.93	33.93	0.00	17.14	17.14	0.00	20.43	20.43	0.00	14.11	14.11	SUG	Galveston
15.43	5.90	21.33	15.43	18.56	33.99	15.43	18.75	34.19	15.43	3.83	19.26	15.43	3.83	19.26	15.43	3.83	19.26	ETX	Houston
18.87	13.81	32.69	18.87	13.81	32.69	18.87	13.81	32.69	18.87	-9.27	9.60	18.87	-9.27	9.60	18.87	-9.27	9.60	ETX	Laredo
16.08	10.44	26.52	16.08	10.98	27.06	16.08	12.72	28.80	16.08	-0.12	15.96	16.08	3.36	19.44	16.08	1.26	17.34	ENG	Lubbock
12.00	17.64	29.64	12.00	12.84	24.84	12.00	18.78	30.78	12.00	7.28	19.28	12.00	10.92	22.92	12.00	5.06	17.06	SUG	McAllen
16.08	11.16	27.24	16.08	11.16	27.24	16.08	12.84	28.92	16.08	1.08	17.16	16.08	2.34	18.42	16.08	0.84	16.92	ENG	Midland
16.08	10.80	26.88	16.08	8.16	24.24	16.08	13.92	30.00	16.08	-1.08	15.00	16.08	1.92	18.00	16.08	-2.40	13.68	ENG	Odessa
16.52	13.78	30.30	16.52	13.70	30.22	16.52	13.88	30.40	19.11	6.79	25.90	19.11	4.78	23.89	19.11	2.37	21.48	LSG	San Angelo
13.20	16.69	29.89	13.20	11.31	24.51	13.20	15.81	29.01	13.20	5.08	18.28	13.20	7.00	20.20	13.20	1.45	14.65	MUN	San Antonio
24.12	6.50	30.62	24.12	6.42	30.54	24.12	6.61	30.73	24.12	-0.85	23.27	24.12	-2.97	21.15	24.12	-5.49	18.63	LSG	Sherman
24.12	6.65	30.77	24.12	6.66	30.78	24.12	6.76	30.88	24.12	-0.87	23.25	24.12	-3.04	21.08	24.12	-5.62	18.50	LSG	Temple
0.00	37.73	37.73	0.00	36.07	36.07	0.00	38.39	38.39	0.00	31.48	31.48	0.00	27.47	27.47	0.00	24.13	24.13	ARK	Texarkana
19.65	9.94	29.58	19.65	9.94	29.58	19.65	9.94	29.58	19.65	-6.31	13.34	19.65	-6.31	13.34	19.65	-6.31	13.34	ETX	Tyler
16.52	14.38	30.90	16.52	14.30	30.82	16.52	14.49	31.01	24.12	7.09	31.21	24.12	4.99	29.11	24.12	2.48	26.60	LSG	Waco
16.52	14.17	30.69	16.52	14.09	30.61	16.52	14.28	30.80	24.12	-0.85	23.27	24.12	-2.99	21.13	24.12	-5.54	18.58	LSG	Wichita Falls
13.86	15.76	29.62	13.86	15.01	28.87	13.86	17.30	31.16	15.47	5.00	20.47	15.47	5.03	20.51	15.47	2.52	18.00		Average

**TABLE 5 - TWENTY FIVE TEXAS CITIES
SIX MCF RESIDENTIAL GAS BILL
COST OF SERVICE
(EXCLUDING COST OF GAS)**

CITY	GAS CO.	Jan-00	Feb-00	Mar-00	Apr-00	May-00	Jun-00	Jul-00	Aug-00	Sep-00	Oct-99	Nov-99	Dec-99
Abilene	LSG	11.55	11.55	11.55	11.55	11.55	11.55	10.39	10.39	10.39	11.55	11.55	11.55
Amarillo	ENG	11.79	11.79	11.79	11.79	11.79	11.79	11.79	11.79	11.79	10.70	10.70	10.70
Austin	SUG	17.22	17.22	17.22	17.22	17.22	17.22	17.22	17.22	17.22	17.22	17.22	17.22
Beaumont	ETX	16.96	16.96	16.96	16.96	16.96	16.96	16.96	16.96	16.96	16.96	16.96	16.96
Brownsville	SUG	15.72	15.72	15.72	15.72	15.72	15.72	15.72	15.72	15.72	15.72	15.72	15.72
Bryan	LSG	9.91	9.91	9.91	9.91	9.91	9.91	9.91	9.91	9.91	9.91	9.91	9.91
Corpus Christi	SUG	21.09	21.09	21.09	21.09	21.09	21.09	21.09	21.09	21.09	20.48	20.48	20.48
Dallas	LSG	12.09	12.09	12.09	12.09	12.09	12.09	12.09	12.09	12.09	12.09	12.09	12.09
El Paso	SUG	9.75	9.75	9.75	9.10	9.10	9.10	9.10	9.10	9.10	9.75	9.75	9.75
Fort Worth	LSG	16.20	16.20	16.20	16.20	16.20	16.20	16.20	16.20	16.20	16.20	16.20	16.20
Galveston	SUG	17.00	17.00	17.00	17.00	17.00	17.00	17.00	17.00	17.00	17.00	17.00	17.00
Houston	ETX	13.38	13.38	13.38	13.38	13.38	13.38	13.38	13.38	13.38	13.38	13.38	13.38
Laredo	ETX	16.85	16.85	16.85	16.85	16.85	16.85	16.85	16.85	16.85	16.85	16.85	16.85
Lubbock	ENG	13.74	13.74	13.74	13.74	13.74	13.74	13.74	13.74	13.74	13.74	13.74	13.74
McAllen	SUG	15.72	15.72	15.72	15.72	15.72	15.72	15.72	15.72	15.72	15.72	15.72	15.72
Midland	ENG	13.74	13.74	13.74	13.74	13.74	13.74	13.74	13.74	13.74	13.74	13.74	13.74
Odessa	ENG	13.74	13.74	13.74	13.74	13.74	13.74	13.74	13.74	13.74	13.74	13.74	13.74
San Angelo	LSG	12.87	12.87	12.87	12.87	11.02	11.02	13.88	13.88	13.88	11.02	12.87	12.87
San Antonio	MUN	16.93	16.93	16.93	16.93	16.93	16.93	16.93	16.93	16.93	16.93	16.93	16.93
Sherman	LSG	13.80	13.80	13.80	13.80	13.80	13.80	13.80	13.80	13.80	13.80	13.80	13.80
Temple**	LSG	13.30	13.30	13.30	13.30	9.20	9.20	9.20	9.20	9.20	9.20	13.30	13.30
Texarkana	ARK	16.08	16.08	16.08	16.08	16.08	16.08	16.08	16.08	16.08	16.08	16.08	16.08
Tyler	ETX	16.29	16.29	16.29	16.29	16.29	16.29	16.29	16.29	16.29	16.29	16.29	16.29
Waco	LSG	11.62	11.62	11.62	11.62	11.62	11.62	12.92	12.92	12.92	11.62	11.62	11.62
Wichita Falls	LSG	10.37	10.37	10.37	10.38	10.38	10.38	10.88	10.88	10.88	10.37	10.37	10.37
Average		14.31	14.31	14.31	14.28	14.05	14.05	14.19	14.19	14.19	14.00	14.24	14.24

RATE CHANGE APPROVALS - Amarillo - Jan 00, El Paso - Mar 00

**WINTER RATES - NOVEMBER THROUGH APRIL, SUMMER RATES - MAY THROUGH OCTOBER

TWENTY-FIVE TEXAS CITIES
SIX MCF RESIDENTIAL GAS BILL
COST OF SERVICE

